

Kentucky and Tennessee Tornadoes – December 2023

Assessment Period: December 9-11, 2023

Publication Date: December 19, 2023

USDA NASS

Disaster Monitoring Team

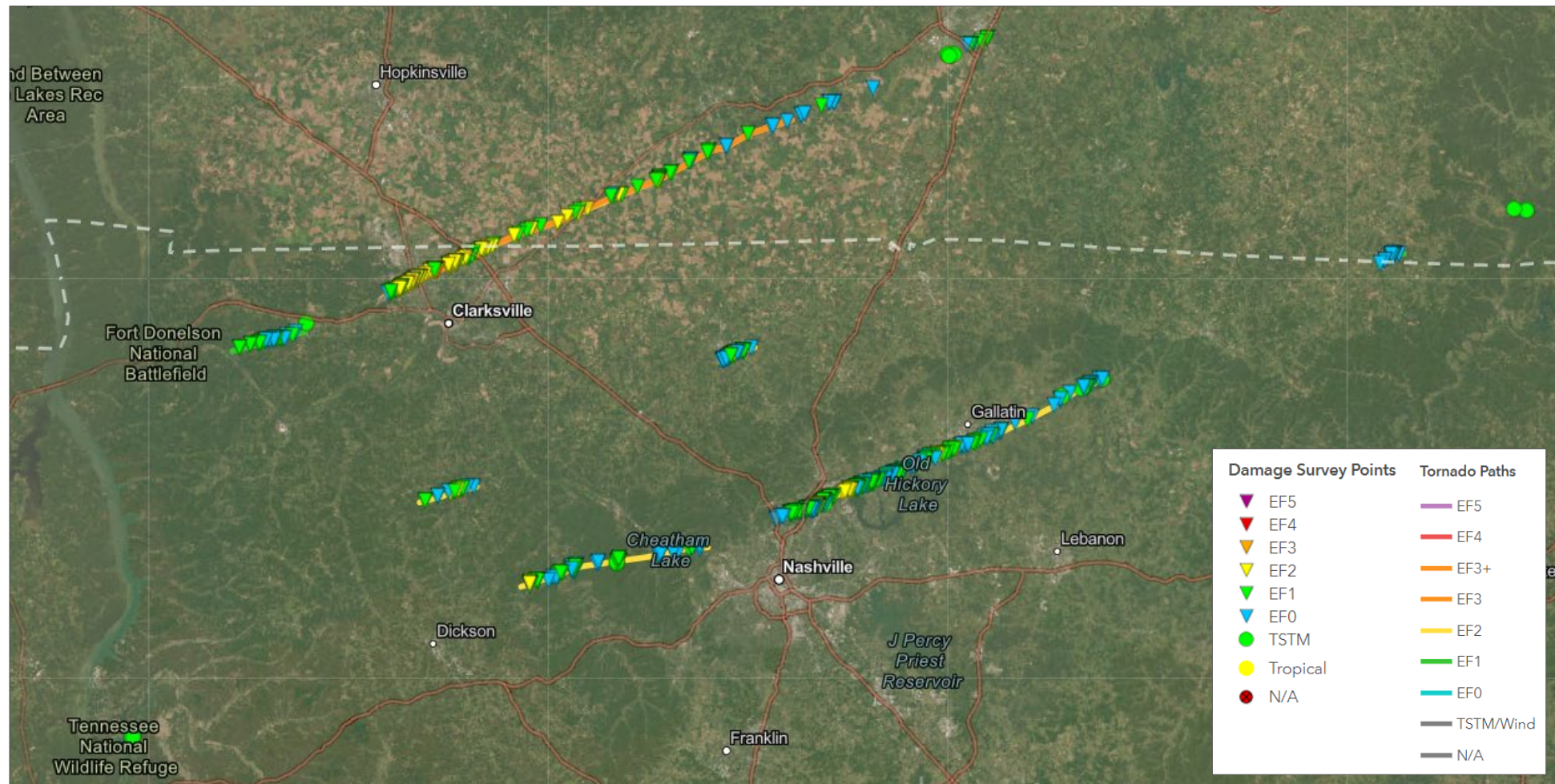


Event Summary

- **Timeframe:** December 9-11, 2023
- **Location:** Kentucky & Tennessee, U.S.
- **Event:** Strong storm system and tornadoes
(https://www.weather.gov/lmk/2023Dec09_SevereWeather)
 - Tornadoes of note include an EF1 tornado near Dresden, TN, an EF2 tornado in Hendersonville, TN, and an EF3 tornado in Clarksville, TN.
 - Tornadoes killed at least six people and injured 72 others.
- **Crops Affected:** While most crops have been harvested for 2023, most 2024 winter wheat has been planted and is emerged at this time
([https://www.nass.usda.gov/Charts and Maps/Crop Progress & Condition/index.php](https://www.nass.usda.gov/Charts_and_Maps/Crop_Progress_&_Condition/index.php)).



December 9, 2023: Tennessee-Kentucky Tornadoes

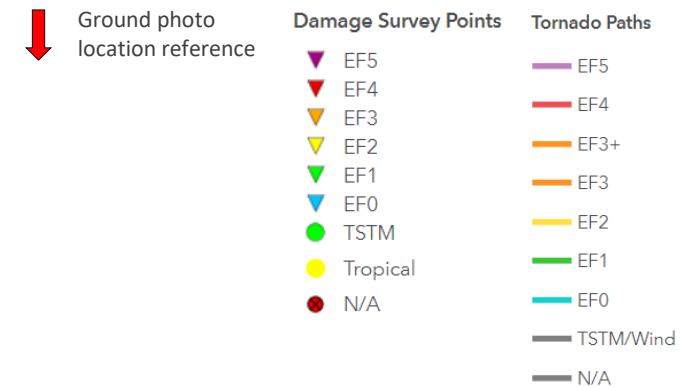
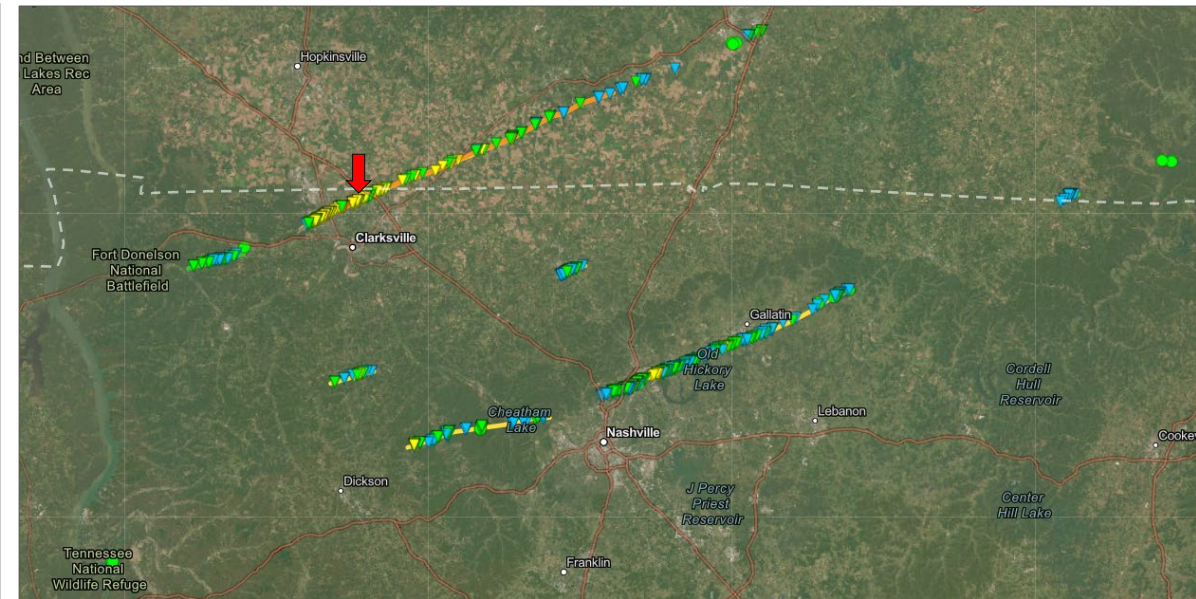


Preliminary Storm Track Data Source: NOAA/National Weather Service - [ArcGIS - December 9, 2023 - Middle Tennessee Tornadoes](#)

NWS Survey information regarding tornadoes that occurred on December 9, 2023 within the Nashville, TN County Warning Areas. Included in this data source are storm survey damage points with pictures where available, tornado damage paths, and estimated damage swath information where applicable.

ALL DATA SHOULD BE CONSIDERED PRELIMINARY. For more information, visit [December 9, 2023 Tornado Outbreak \(weather.gov\)](#)

Clarkesville, TN: Damage to Crop Field

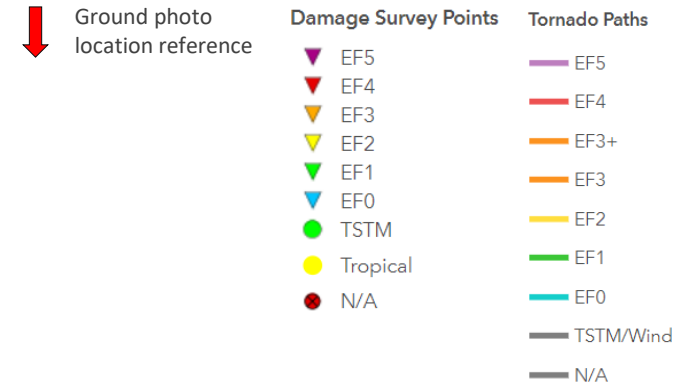
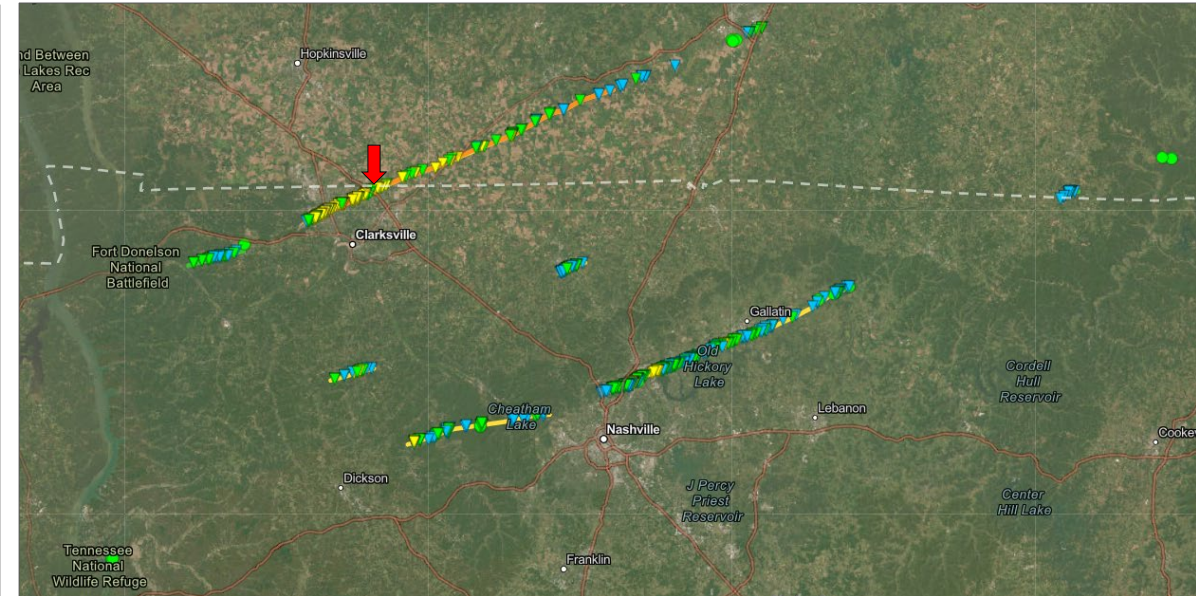


Ground Photo and Preliminary Storm Track Data Source: NOAA/National Weather Service - [ArcGIS - December 9, 2023 - Middle Tennessee Tornadoes](#)

NWS Survey information regarding tornadoes that occurred on December 9, 2023 within the Nashville, TN County Warning Areas. Included in this data source are storm survey damage points with pictures where available, tornado damage paths, and estimated damage swath information where applicable.

ALL DATA SHOULD BE CONSIDERED PRELIMINARY. For more information, visit [December 9, 2023 Tornado Outbreak \(weather.gov\)](#)

Clarksville, TN: Damage to Metal Building



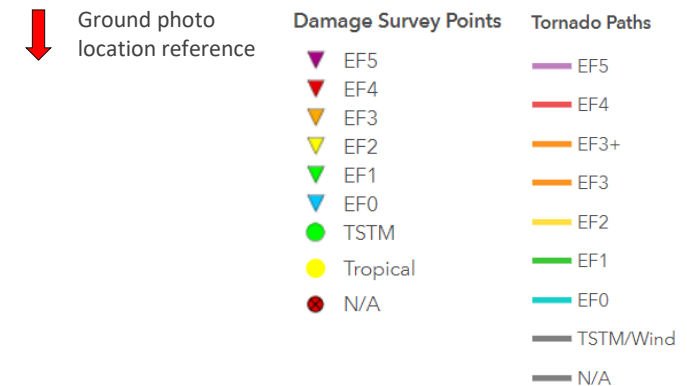
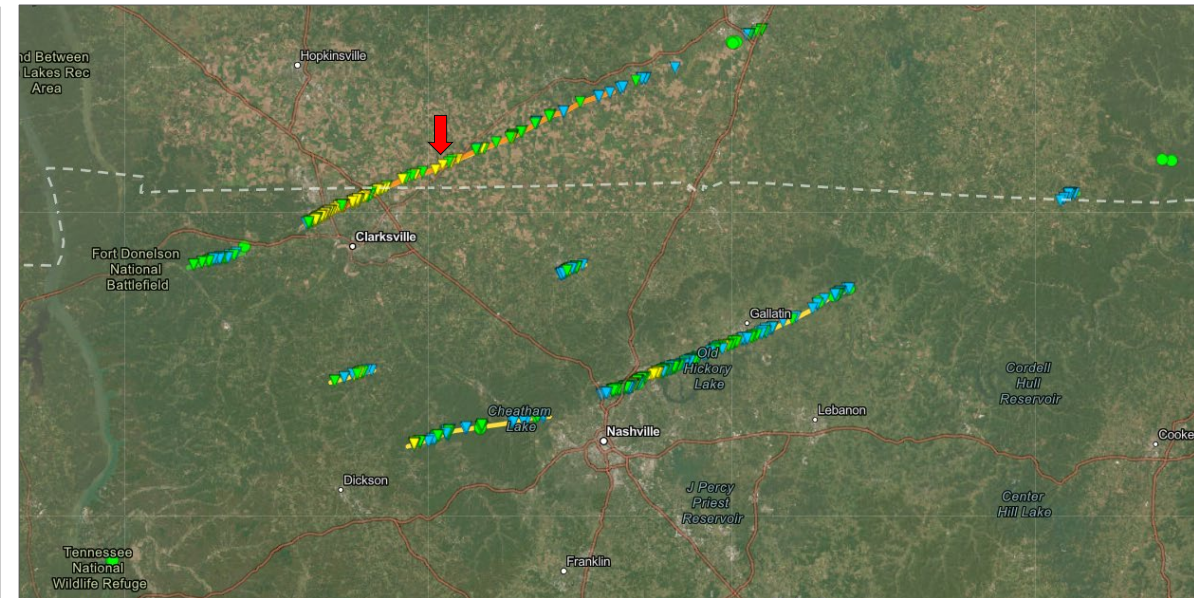
Ground Photo and Preliminary Storm Track Data Source: NOAA/National Weather Service - [ArcGIS - December 9, 2023 - Middle Tennessee Tornadoes](#)

NWS Survey information regarding tornadoes that occurred on December 9, 2023 within the Nashville, TN County Warning Areas. Included in this data source are storm survey damage points with pictures where available, tornado damage paths, and estimated damage swath information where applicable.

ALL DATA SHOULD BE CONSIDERED PRELIMINARY. For more information, visit [December 9, 2023 Tornado Outbreak \(weather.gov\)](#)



Guthrie, KY: Damage to Trees in Crop Field



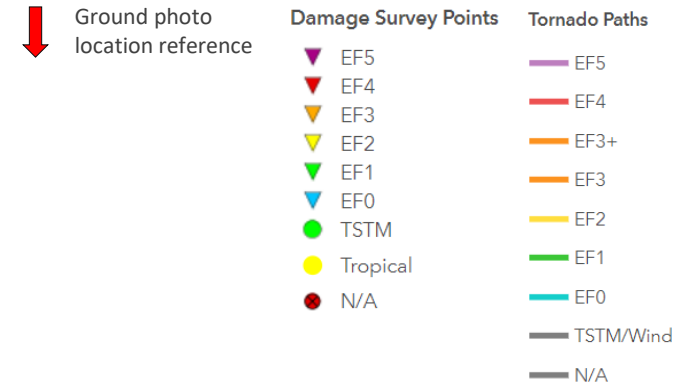
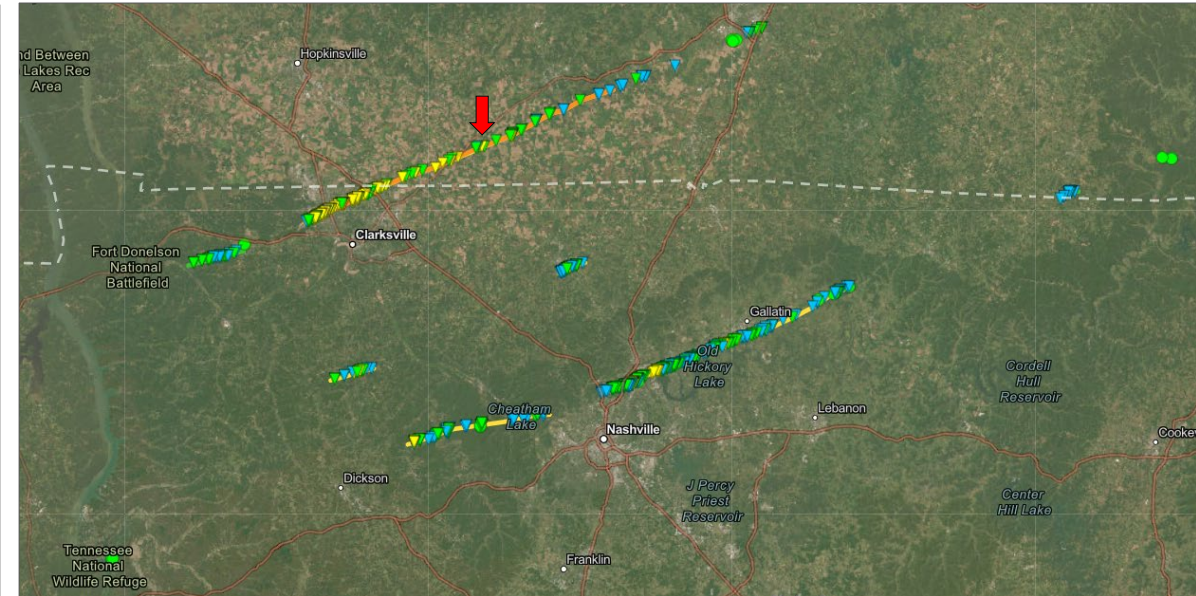
Ground Photo and Preliminary Storm Track Data Source: NOAA/National Weather Service - [ArcGIS - December 9, 2023 - Middle Tennessee Tornadoes](#)

NWS Survey information regarding tornadoes that occurred on December 9, 2023 within the Nashville, TN County Warning Areas. Included in this data source are storm survey damage points with pictures where available, tornado damage paths, and estimated damage swath information where applicable.

ALL DATA SHOULD BE CONSIDERED PRELIMINARY. For more information, visit [December 9, 2023 Tornado Outbreak \(weather.gov\)](#)



Allensville, KY: Debris in Crop Field



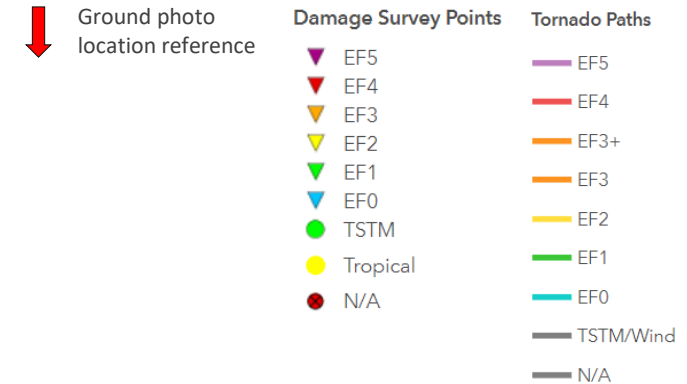
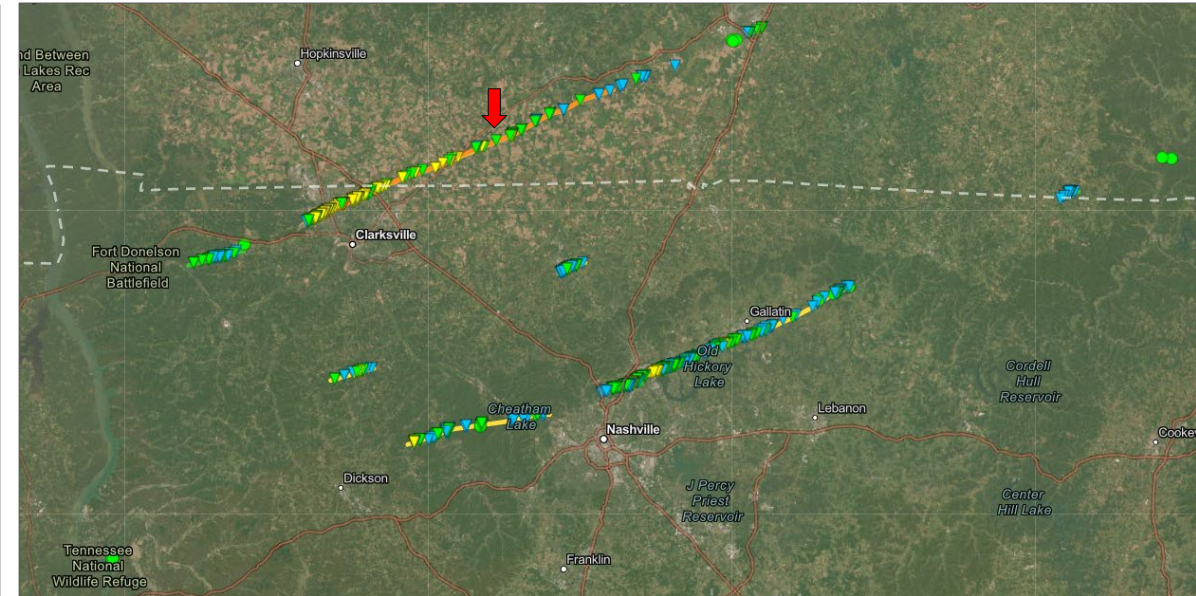
Ground Photo and Preliminary Storm Track Data Source: NOAA/National Weather Service - [ArcGIS - December 9, 2023 - Middle Tennessee Tornadoes](#)

NWS Survey information regarding tornadoes that occurred on December 9, 2023 within the Nashville, TN County Warning Areas. Included in this data source are storm survey damage points with pictures where available, tornado damage paths, and estimated damage swath information where applicable.

ALL DATA SHOULD BE CONSIDERED PRELIMINARY. For more information, visit [December 9, 2023 Tornado Outbreak \(weather.gov\)](#)



Olmstead, KY: Damage to Small Barn or Farm Outbuilding



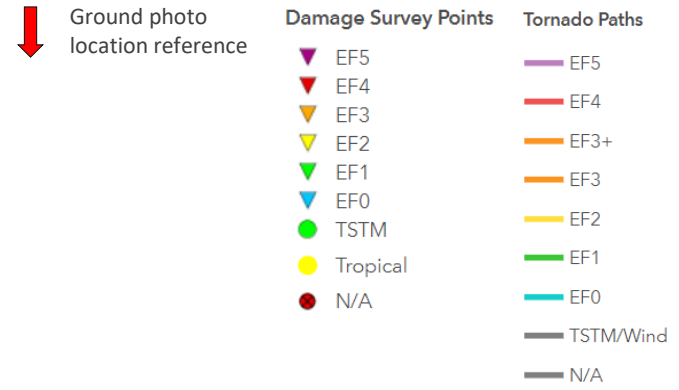
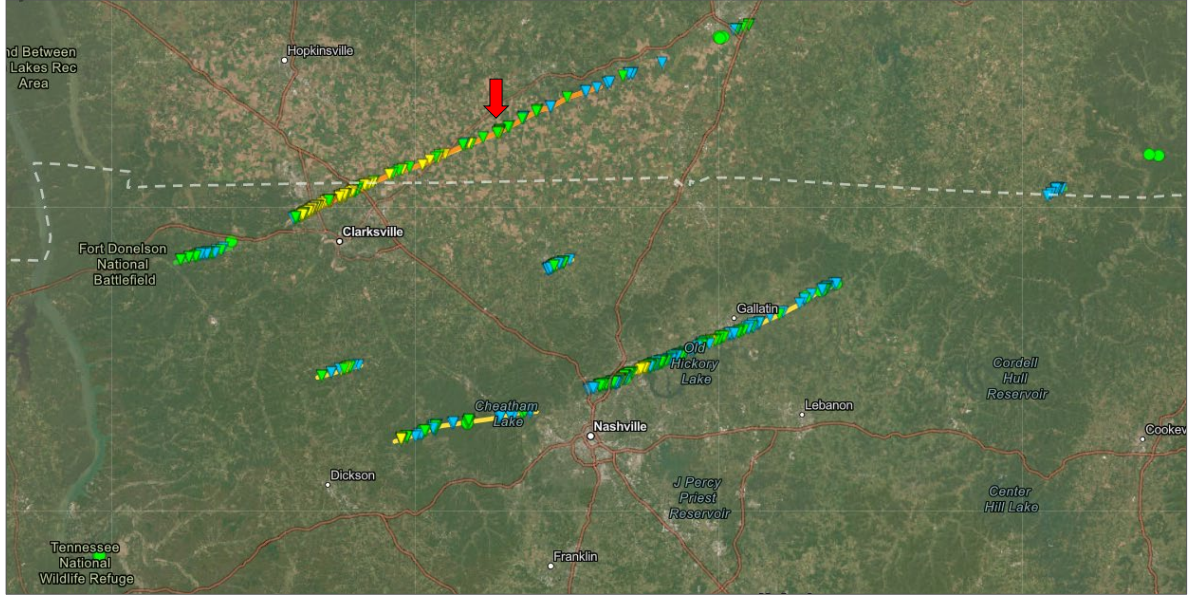
Ground Photo and Preliminary Storm Track Data Source: NOAA/National Weather Service - [ArcGIS - December 9, 2023 - Middle Tennessee Tornadoes](#)

NWS Survey information regarding tornadoes that occurred on December 9, 2023 within the Nashville, TN County Warning Areas. Included in this data source are storm survey damage points with pictures where available, tornado damage paths, and estimated damage swath information where applicable.

ALL DATA SHOULD BE CONSIDERED PRELIMINARY. For more information, visit [December 9, 2023 Tornado Outbreak \(weather.gov\)](#)



Olmstead, KY: Damage near Agricultural Area



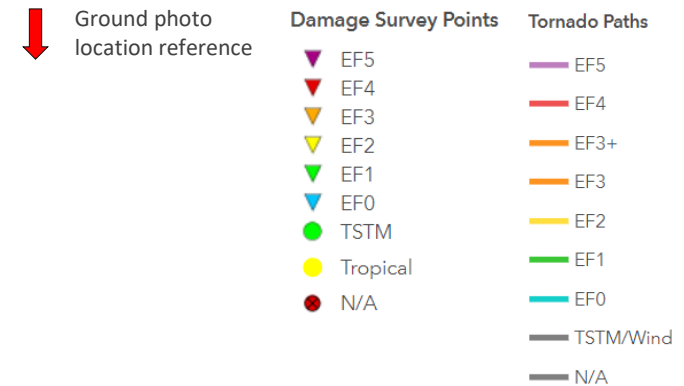
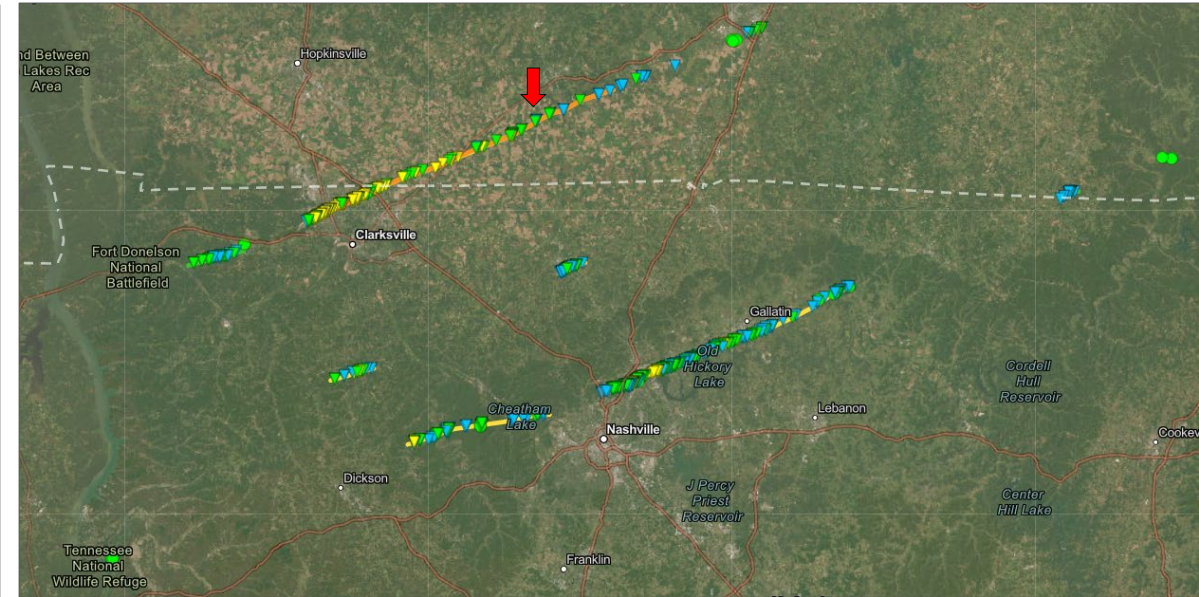
Ground Photo and Preliminary Storm Track Data Source: NOAA/National Weather Service - [ArcGIS - December 9, 2023 - Middle Tennessee Tornadoes](#)

NWS Survey information regarding tornadoes that occurred on December 9, 2023 within the Nashville, TN County Warning Areas. Included in this data source are storm survey damage points with pictures where available, tornado damage paths, and estimated damage swath information where applicable.

ALL DATA SHOULD BE CONSIDERED PRELIMINARY. For more information, visit [December 9, 2023 Tornado Outbreak \(weather.gov\)](#)



Russellville, KY: Damage to Small Barn or Farm Outbuilding



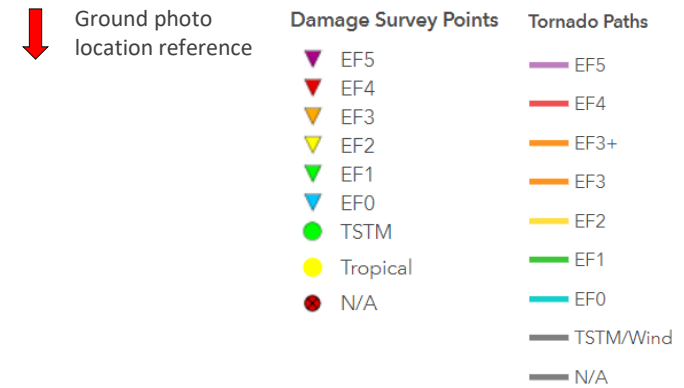
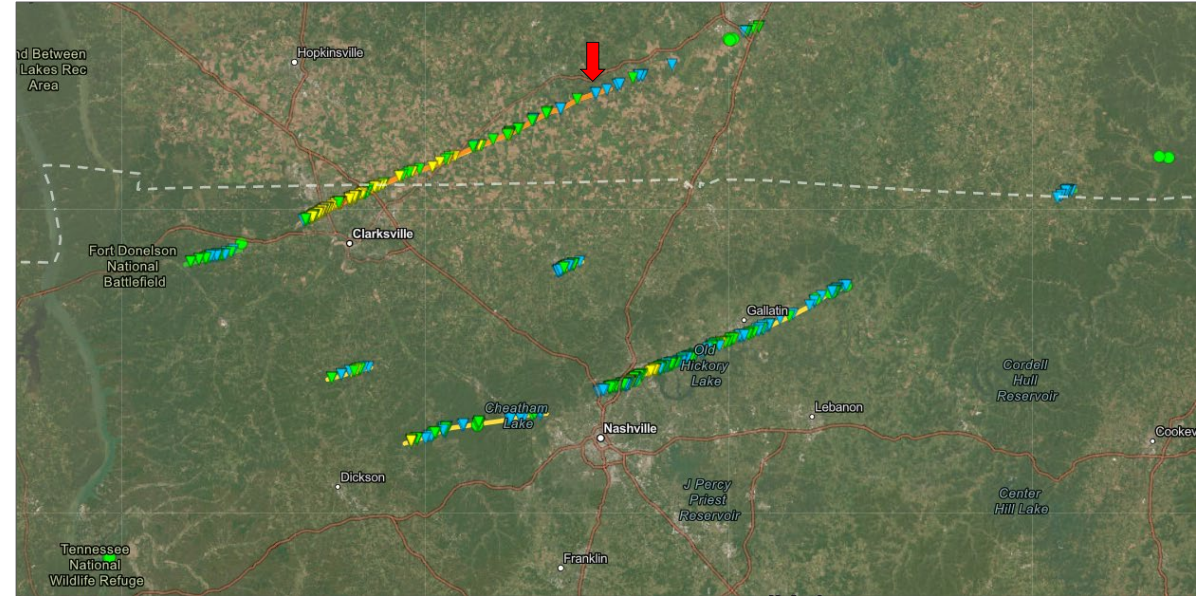
Ground Photo and Preliminary Storm Track Data Source: NOAA/National Weather Service - [ArcGIS - December 9, 2023 - Middle Tennessee Tornadoes](#)

NWS Survey information regarding tornadoes that occurred on December 9, 2023 within the Nashville, TN County Warning Areas. Included in this data source are storm survey damage points with pictures where available, tornado damage paths, and estimated damage swath information where applicable.

ALL DATA SHOULD BE CONSIDERED PRELIMINARY. For more information, visit [December 9, 2023 Tornado Outbreak \(weather.gov\)](#)



Auburn, KY: Damage to Small Barn or Farm Outbuilding



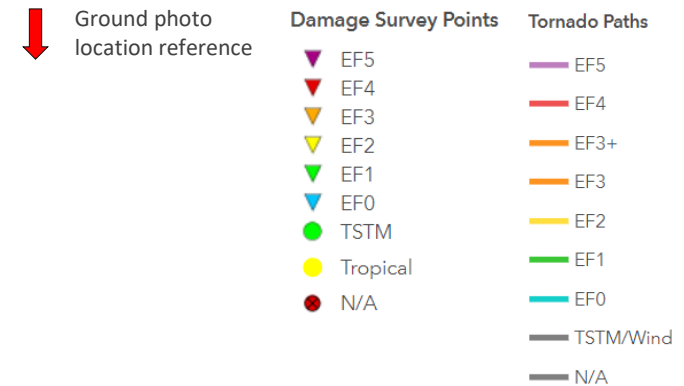
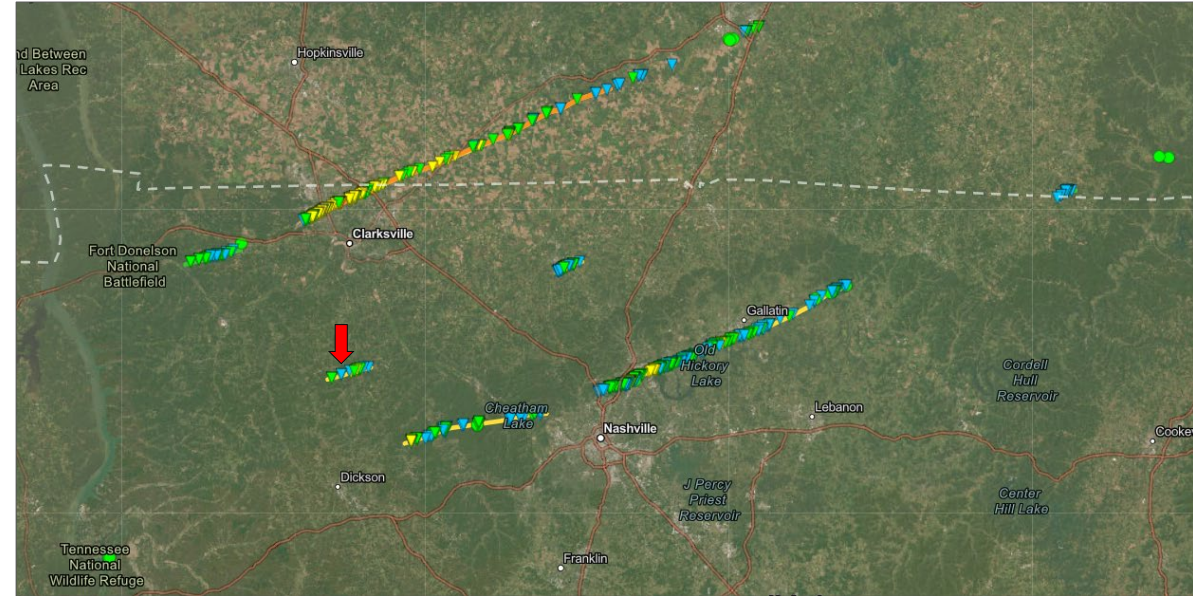
Ground Photo and Preliminary Storm Track Data Source: NOAA/National Weather Service - [ArcGIS - December 9, 2023 - Middle Tennessee Tornadoes](#)

NWS Survey information regarding tornadoes that occurred on December 9, 2023 within the Nashville, TN County Warning Areas. Included in this data source are storm survey damage points with pictures where available, tornado damage paths, and estimated damage swath information where applicable.

ALL DATA SHOULD BE CONSIDERED PRELIMINARY. For more information, visit [December 9, 2023 Tornado Outbreak \(weather.gov\)](#)



Cumberland Furnace, TN: Damage to Small Barn or Farm Outbuilding



Ground Photo and Preliminary Storm Track Data Source: NOAA/National Weather Service - [ArcGIS - December 9, 2023 - Middle Tennessee Tornadoes](#)

NWS Survey information regarding tornadoes that occurred on December 9, 2023 within the Nashville, TN County Warning Areas. Included in this data source are storm survey damage points with pictures where available, tornado damage paths, and estimated damage swath information where applicable.

ALL DATA SHOULD BE CONSIDERED PRELIMINARY. For more information, visit [December 9, 2023 Tornado Outbreak \(weather.gov\)](#)



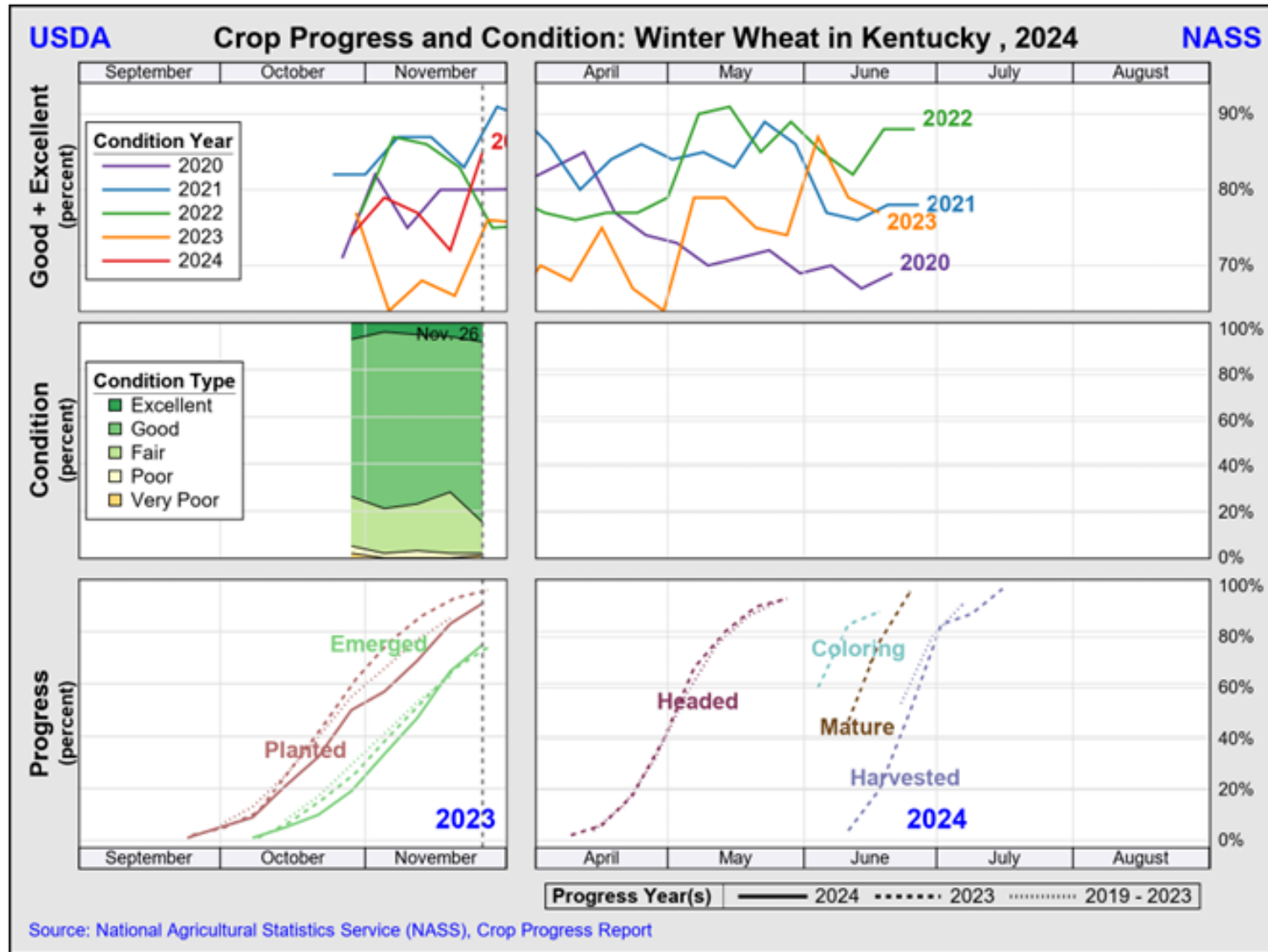
Clarkesville, TN: Satellite Image of Damage to Crop Field



Preliminary Storm Track Data Source: NOAA/National Weather Service

Imagery Sensor: Sentinel-2, Level 2-A (Product Source - Microsoft Planetary Computer Hosted on ESRI Living Atlas)

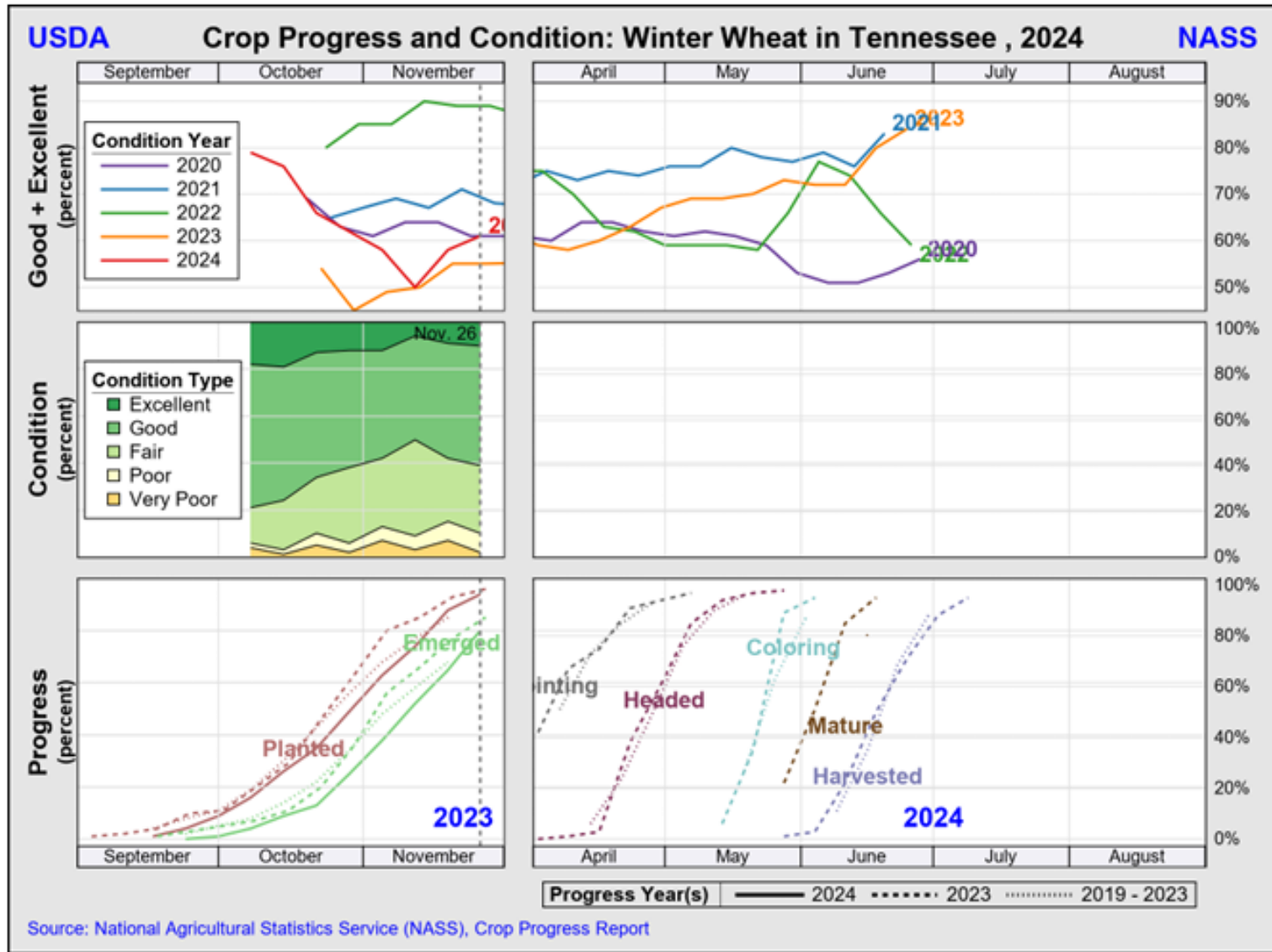




Crops Affected: While most crops have been harvested for 2023, most 2024 winter wheat has been planted and is emerged at this time.

<https://www.nass.usda.gov/Charts and Maps/Crop Progress & Condition/2024/index.php>



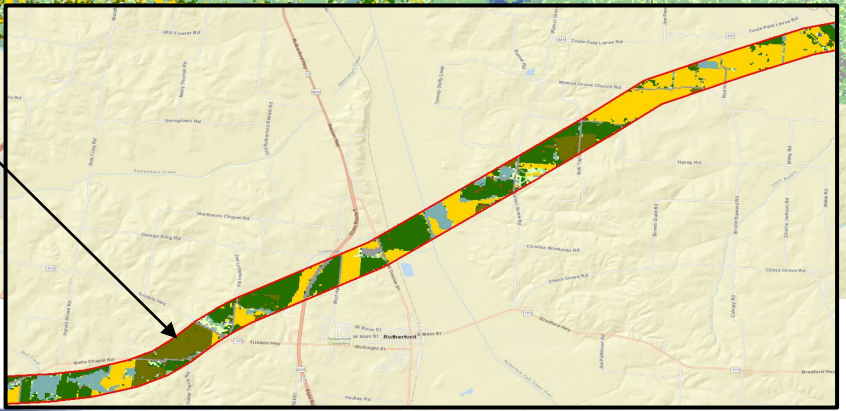
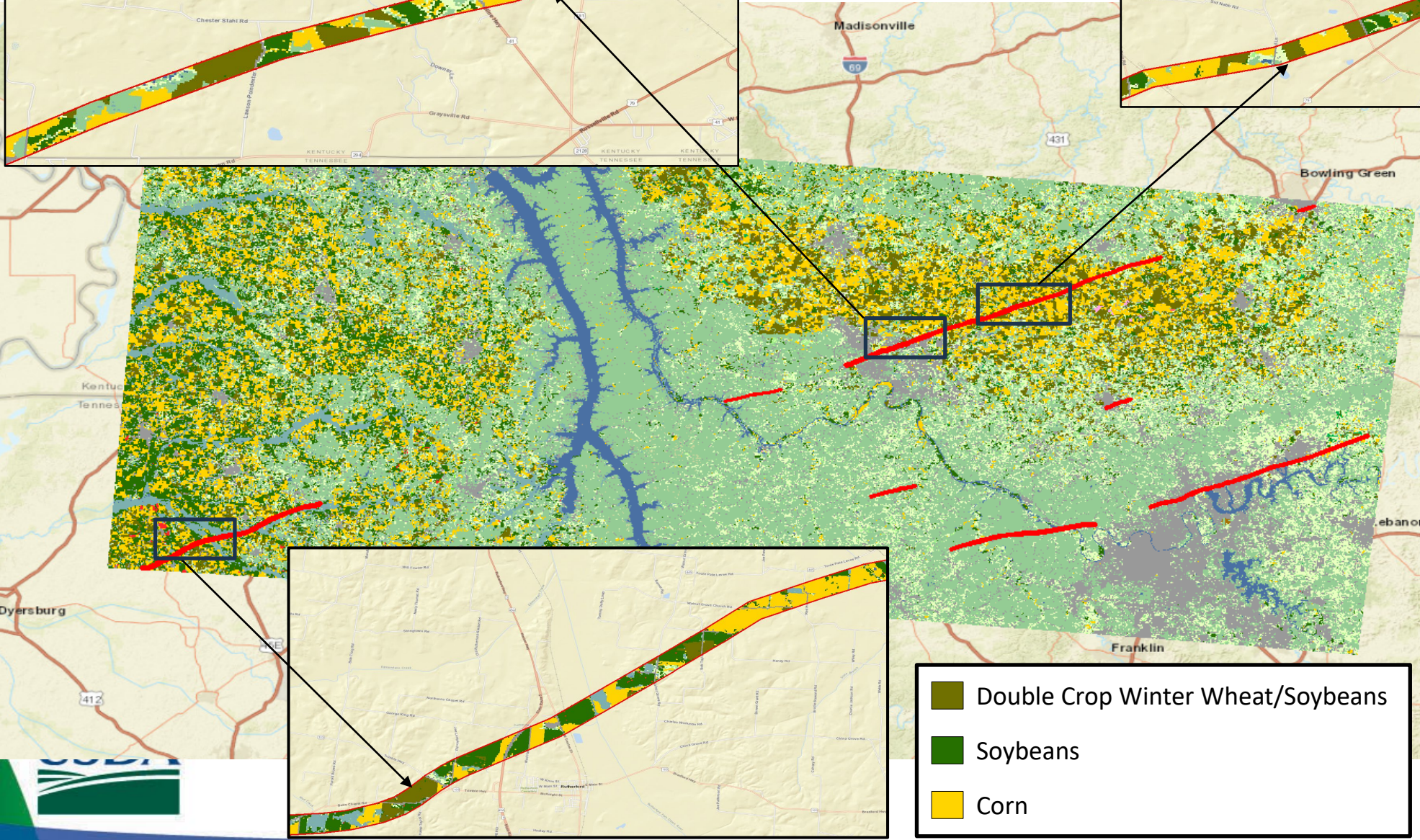
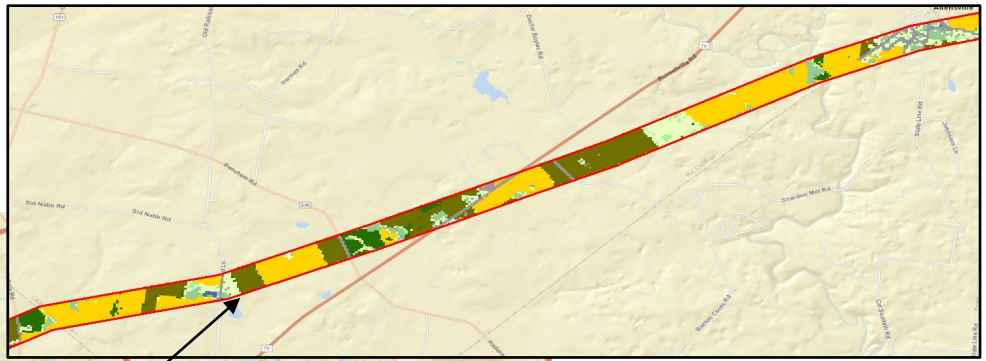
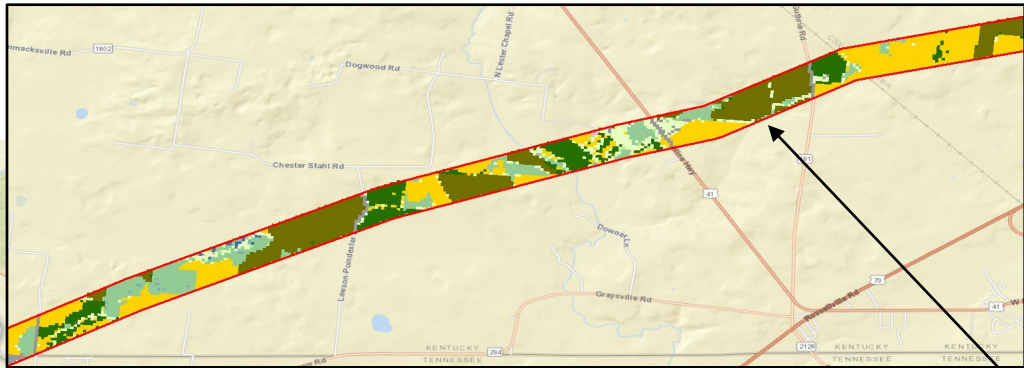


Crops Affected: While most crops have been harvested for 2023, most 2024 winter wheat has been planted and is emerged at this time.

<https://www.nass.usda.gov/Charts and Maps/Crop Progress & Condition/2024/index.php>



Potential crops impacted by Tornadoes in Kentucky and Tennessee, according to the 2022 CDL (not official NASS estimates)



- Double Crop Winter Wheat/Soybeans
- Soybeans
- Corn

2022 CDL

| Class_Name | Acres |
|---------------------------------|----------------|
| Deciduous Forest | 4293.77 |
| Corn | 3586.56 |
| Grassland/Pasture | 2599.35 |
| Soybeans | 2344.71 |
| Dbl Crop WinWht/Soybeans | 1816.96 |
| Developed/Open Space | 1520.29 |
| Developed/Low Intensity | 1369.95 |
| Woody Wetlands | 1002.55 |
| Developed/Med Intensity | 937.17 |
| Developed/High Intensity | 338.71 |
| Mixed Forest | 329.14 |
| Open Water | 319.58 |
| Other Hay/Non Alfalfa | 303.12 |
| Evergreen Forest | 60.71 |
| Winter Wheat | 15.79 |
| Shrubland | 14.23 |
| Tobacco | 11.56 |
| Barren | 9.34 |
| Cotton | 5.12 |
| Herbaceous Wetlands | 2.67 |
| Dbl Crop Barley/Soybeans | 2.67 |
| Alfalfa | 1.78 |